

**TDSi** <sup>UK</sup>  
INNOVATE INTEGRATE INSPIRE

**HIKVISION**®

GARDiS Software Integration

**Hikvision HikCentral  
Professional Integration**

4420-3064

## GARDiS Software Hikvision HikCentral Integration

TDSi's GARDiS Software integrates with Hikvision's HikCentral Professional via Hikvision Optimus. The Integration allows users to synchronize events, alarms and data between systems, both seamlessly and in real-time. The operator can open doors, see door statuses and get alerts from within the user interface of HikCentral Professional (the Control Client).

Additionally, specific events can be set up to trigger actions. For example, a forced-open door could be used to trigger a PTZ camera to zoom in and record whilst simultaneously sending an alert to operators and automatically displaying imaging on a central monitor to ensure proper attention. Alarms appear in the Control Client's alarm list, and the operator can quickly check the status on an eMap as well as triggering certain actions with just a few clicks.

Once installed, users can configure which events and devices are relevant for the installation, and the operator can build a unique event flow logic into the integration. The integration ensures device data and events are always synchronised on both sides.

### At a Glance

- Manage Hikvision CCTV devices and TDSi Access Control devices from a single platform
- Control TDSi's doors and check status in real time via HikCentral Professionals eMap
- Intuitive user interface and flexible configuration via Hikvision Optimus
- Data synchronisation between HikCentral Professional and GARDiS Software.
- Flexible event linkage between TDSi's doors and Hikvision CCTV products.
- HikCentral functionalities linked to GARDiS access point actions.
- TDSi access point alarm history can be searched and reviewed.

**Please Note:** The GARDiS Software Hikvision HikCentral Integration requires GARDiS Software version 2.5 or above, it is compatible with HikCentral Professional V2.3 and above and requires the HikvisionOptimus Integration Protocol to communicate between GARDiS and HikCentral.

## Hikvision

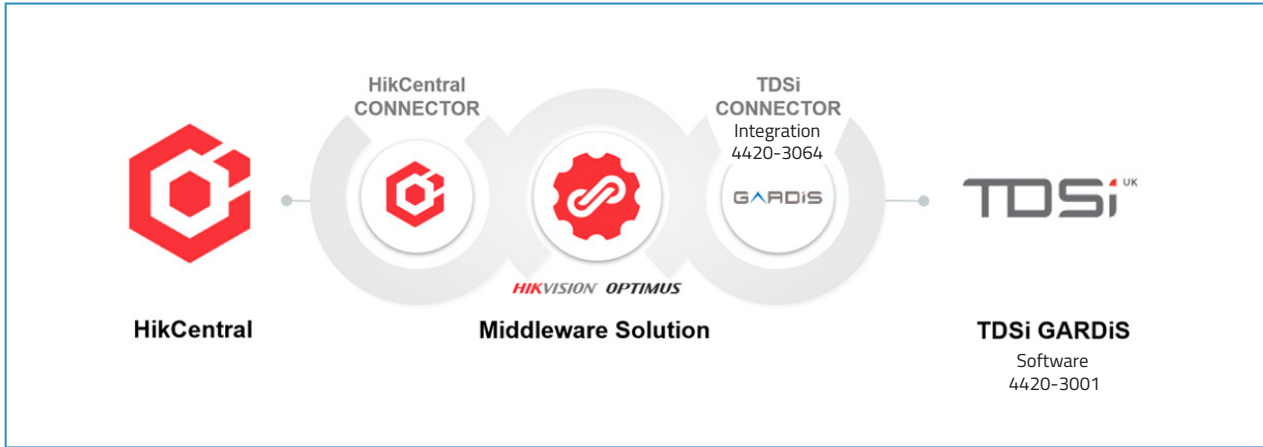
Hikvision provides a broad range of physical security products, covering video security, access control, and alarm systems. They also provide integrated security solutions powered by AI technology to support end-users with new applications and possibilities for safety management and business intelligence.

Hikvision has established one of the most extensive marketing networks in the industry, comprising 66 subsidiaries and branch offices globally, to ensure quick responses to the needs of customers, users and partners. Hikvision products serve a diverse set of vertical markets covering more than 150 countries. Hikvision went public in May, 2010, and is listed on SMEs Board at Shenzhen Stock Exchange.

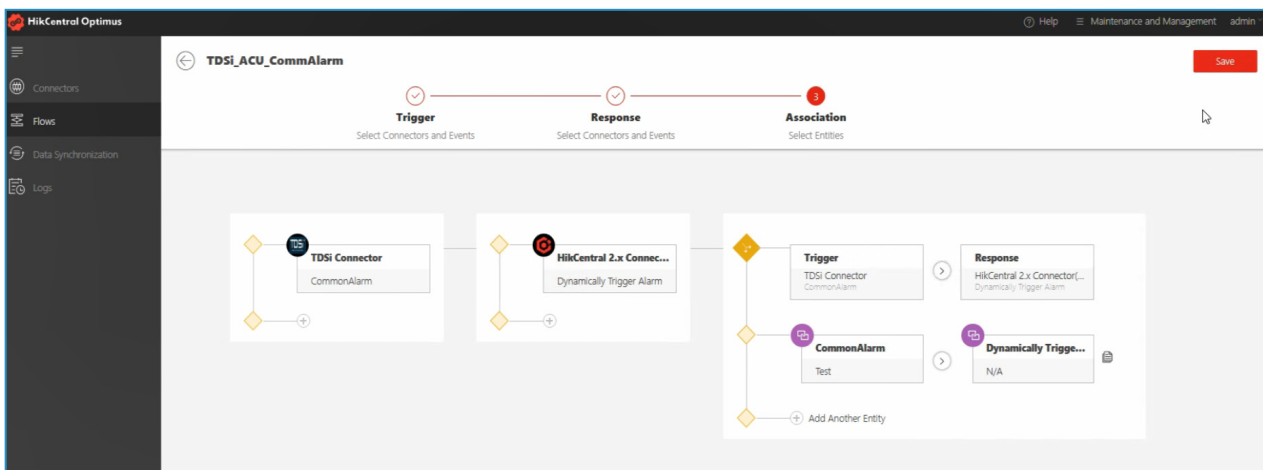
## About TDSi

**Robust and reliable Access Control Systems manufactured by world-renowned security specialists TDSi for the last 40 years.**

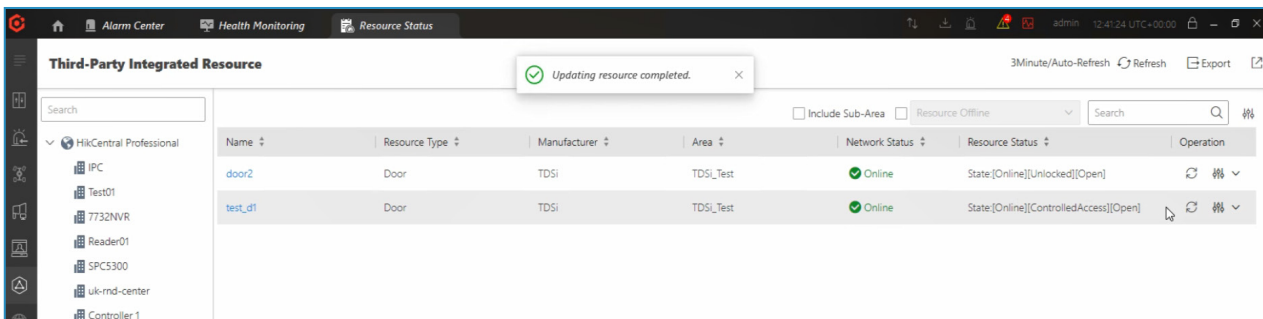
Protecting and securing your building, assets, and people is a high priority for any business. However, those responsible for building security often find themselves overwhelmed by choice. TDSi is a specialist in access control, offering a range of superior products that not only answer the security challenges of the 21st century but delivers peace of mind to those who trust in our expertise and experience.



System Architecture showing how HikCentral integrates with GARDiS Software



Using Hikcentral to configure triggers and responses using TDSi's GARDiS Access Control System.



Configuring GARDiS Access Control components within Hikcentral.

Product Code	Name	Description
4420-3064	GARDiS Hikvision Hikcentral Integration License	Integration of GARDiS Pro to Hikvision Hikcentral Professional via HikvisionOptimus Connector

# TDSi<sup>UK</sup>

 [tdsi.co.uk](https://tdsi.co.uk)

 [sales@tdsi.co.uk](mailto:sales@tdsi.co.uk)

 +44(0)1202 723 535

Unit 10 Concept Park, Innovation Close,  
Poole, Dorset, BH12 4QT, UK