

# EXGARDE Texecom Integration

## User Manual

UM0077.GB Issue 4 11/08/2015

[www.tdsi.co.uk](http://www.tdsi.co.uk)

TDSi  
Unit 10 Concept Park  
Innovation Close  
Poole  
Dorset  
BH12 4QT, UK

Tel: +44 (0) 1202 723535  
Fax: +44 (0) 1202 724975

Sales Enquiries:	<a href="mailto:sales@tdsi.co.uk">sales@tdsi.co.uk</a>
Marketing Support:	<a href="mailto:marketing@tdsi.co.uk">marketing@tdsi.co.uk</a>
Technical Support:	<a href="mailto:support@tdsi.co.uk">support@tdsi.co.uk</a>

## Foreword

© 2011 TDSi Ltd. All rights reserved.

Time and Data Systems International Ltd operate a policy of continuous improvement and reserves the right to change specifications, colours or prices of any of its products without prior notice.

## Guarantee

For terms of guarantee, please contact your supplier.

## Trademarks

Copyright © 2011 Time and Data Systems International Ltd (TDSi). This document or any software supplied with it may not be used for any purpose other than that for which it is supplied nor shall any part of it be reproduced without the prior written consent of TDSi.

Microsoft and Windows are registered trademarks of Microsoft Corporation.

All other brands and product names are trademarks or registered trademarks of their respective owners.

## Cautions and Notes

The following symbols are used in this guide:



**CAUTION!** This indicates an important operating instruction that should be followed to avoid any potential damage to hardware or property, loss of data, or personal injury.



**NOTE.** This indicates important information to help you make the best use of this product.

# Contents

<b>1.</b>	<b>Summary.....</b>	<b>1</b>
1.1	Purpose.....	1
1.2	Supported Models.....	1
1.3	Operation.....	1
<b>2.</b>	<b>System Requirements.....</b>	<b>2</b>
<b>3.</b>	<b>Functionality.....</b>	<b>3</b>
3.1	Intruder Events.....	3
3.2	Zone Status.....	3
3.3	System Status.....	4
3.4	Partition (Area) Status.....	4
3.5	Arm/Disarm from Access Software.....	4
3.6	Arm/Disarm from Access Events.....	5
<b>4.</b>	<b>Configuration.....</b>	<b>6</b>
4.1	Configure Texecom Panel.....	6
4.2	Add Panel to EXgarde.....	7
4.3	Configure Arm/Disarm Readers.....	9
<b>5.</b>	<b>Appendix.....</b>	<b>11</b>
5.1	Intruder configuration file.....	11

## Figures

Figure 1	Intruder Events.....	3
Figure 2	Zone Status.....	3
Figure 3	System Status.....	4
Figure 4	Area Status.....	4
Figure 5	Arm / Disarm Panel.....	4
Figure 6	Intruder Panel Summary .....	7
Figure 7	Add New Panel.....	8
Figure 8	Configure Arm/Disarm Readers .....	9
Figure 9	Completed Arm/Disarm Configuration .....	10

## Document Control

Issue	Date Issued	Change Detail	Issued by
1	14/01/13	Initial Release	MPS
2	16/10/13	Supported panels added	MPS
3	06/07/15	Arm/Disarm reader requirements added	GFH
4	11/08/15	Title change	GFH

## 1.1 Purpose

This document defines how to configure and set up Intruder Integration between the EXgarde Access Control Software and the Texecom Premier Elite range of panels.

## 1.2 Supported Models

Only the Texecom Premier and Texecom Premier Elite range of panels is supported. The panels must also have the COM-IP module fitted.

The minimum supported firmware versions are:

Tested panels

Elite 24/48/88/168 – V 2.04

Elite 640

Untested panels

Premier 412 – V9.0;

Premier 816 – V9.0;

Premier 832 – V2.0

Premier 48 – V7.5;

Premier 88 – V7.5;

Premier 168 – V7.5;

Premier 640 – V8.0



**NOTE.** This document will be updated as the other panels are tested.

## 1.3 Operation

The intruder panel communicates with the EXgarde SDK via a TCP/IP interface. The communication is two way and uses the intruder panel protocol.



**NOTE.** In order for the integration to work you need the EXgarde SDK installed and configured prior to configuring the intruder panel.



**NOTE.** You will need to ensure that you have the integration and intruder licenses for EXgarde.

## 2. System Requirements

---

The following pre-requisites must be satisfied prior to installing the SDK.

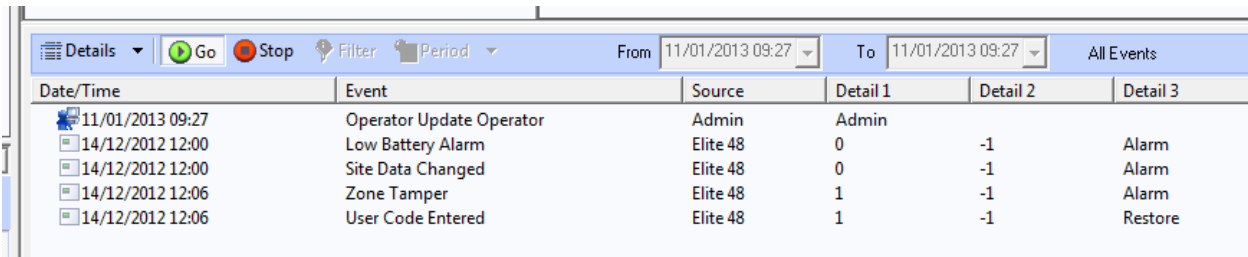
- ✦ -Operating System: Windows7 or higher
- ✦ -IIS 6 or higher
- ✦ -Microsoft .Net 4 or higher
- ✦ -CPU: Pentium or higher

-Development environment: Microsoft Visual Studio 2010 or higher

# 3. Functionality

## 3.1 Intruder Events

The integration allows the EXgarde Access Control software to receive and display all intruder events in the event log. This allows the security operators to see any alarms or events raised by the intruder panel without having to log in to the intruder panel and use the keypad.

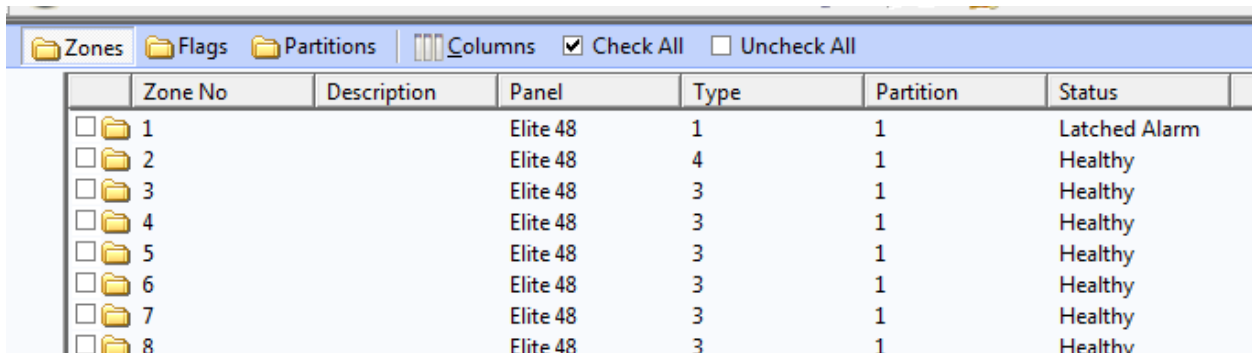


Date/Time	Event	Source	Detail 1	Detail 2	Detail 3
11/01/2013 09:27	Operator Update Operator	Admin	Admin		
14/12/2012 12:00	Low Battery Alarm	Elite 48	0	-1	Alarm
14/12/2012 12:00	Site Data Changed	Elite 48	0	-1	Alarm
14/12/2012 12:06	Zone Tamper	Elite 48	1	-1	Alarm
14/12/2012 12:06	User Code Entered	Elite 48	1	-1	Restore

Figure 1 Intruder Events

## 3.2 Zone Status

The status of all of the zones configured within the intruder panel can be viewed by the operator. This provides a quick way of checking the status of various devices.



Zone No	Description	Panel	Type	Partition	Status
<input type="checkbox"/> 1		Elite 48	1	1	Latched Alarm
<input type="checkbox"/> 2		Elite 48	4	1	Healthy
<input type="checkbox"/> 3		Elite 48	3	1	Healthy
<input type="checkbox"/> 4		Elite 48	3	1	Healthy
<input type="checkbox"/> 5		Elite 48	3	1	Healthy
<input type="checkbox"/> 6		Elite 48	3	1	Healthy
<input type="checkbox"/> 7		Elite 48	3	1	Healthy
<input type="checkbox"/> 8		Elite 48	3	1	Healthv

Figure 2 Zone Status

### 3.3 System Status

This provides an indication of the status of the intruder system by displaying the state of each of the internal system flags along with the status of that flag.

	Flag No	Panel	Description	Status
<input type="checkbox"/>	8	Elite 48	ATS Path Fault	0
<input type="checkbox"/>	9	Elite 48	Mains Power Off	0
<input type="checkbox"/>	10	Elite 48	Auxiliary Fuse Blown	0
<input type="checkbox"/>	11	Elite 48	Bell Tamper	0
<input type="checkbox"/>	12	Elite 48	Auxiliary Tamper	0
<input type="checkbox"/>	13	Elite 48	Panel Lid Tamper	0
<input type="checkbox"/>	14	Elite 48	Engineer Working	0

Figure 3 System Status

### 3.4 Partition (Area) Status

This provides an indication of the status of each of the partitions (areas) of the intruder panel.

	Partition No	Panel	Description
<input type="checkbox"/>	0	Elite 48	Ready, Force Armable, Bell SCB, Detector reset
<input type="checkbox"/>	1	Elite 48	Ready, Force Armable, Bell SCB, Detector reset
<input type="checkbox"/>	2	Elite 48	Ready, Force Armable, Bell SCB, Detector reset
<input type="checkbox"/>	3	Elite 48	Ready, Force Armable, Bell SCB, Detector reset

Figure 4 Area Status

### 3.5 Arm/Disarm from Access Software

The intruder panel can be armed and disarmed by the operator from within EXgarde.

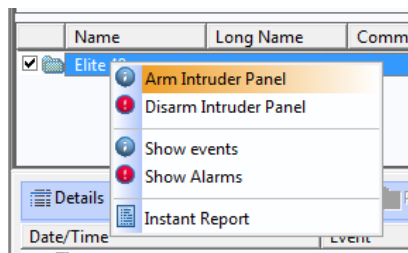


Figure 5 Arm / Disarm Panel



**NOTE.** This will only perform a full **Arm** or **Disarm**



**CAUTION! IF THERE ARE ERRORS ON THE PANEL THEN YOU WILL NOT BE NOTIFIED WHEN PERFORMING A SET USING THIS METHOD**



## 3.6 Arm/Disarm from Access Events

The intruder panel can also be configured to automatically **arm** or **disarm** based upon Access Granted events. This can be configured such that a certain number of Access Granted events must occur within a given time period in order to arm/disarm the panel.



**NOTE.** This will only perform a full **arm** or **disarm**. Arming and disarming of zones (part set) is not supported



**NOTE.** In order to arm and disarm the intruder panel, separate IN and OUT readers will be required.



**CAUTION! IF THERE ARE ERRORS ON THE PANEL THEN YOU WILL NOT BE NOTIFIED WHEN PERFORMING A SET USING THIS METHOD**



**CAUTION! IF YOUR SYSTEM IS MONITORED WITH A URN THEN THIS PROCESS OF ARMING / DISARMING THE PANEL IS NOT ALLOWED UNDER THE REGULATIONS.**

# 4. Configuration

## 4.1 Configure Texecom Panel

Once the IP address has been configured on the COM-IP module it should be set to **Nothing** within the Elite panel.



**NOTE.** If you have set the Com1 option to be Com-IP then ensure that this is configured to Nothing.

Then configure the COM-IP module by opening a command prompt. Telnet to the panel by entering **telnet x.x.x.x 9999** and entering the Texecom password.



**NOTE.** You will need to contact your Texecom dealer or Texecom directly to obtain the password. TDSi cannot and will not supply this.

Select option '0' to set up the IP address and netmask if you have not already done so.

Select option '1 – Channel 1'

Ensure the following are changed if not already set:

- Baudrate = 19200
- I/F Mode = CC
- Send '+++' in Modem Mode is set to N

Accept all other defaults

Select **9** to save and exit

## 4.2 Add Panel to EXgarde

Select the Equipment tab, and Summary Display and then Intruder Panels.

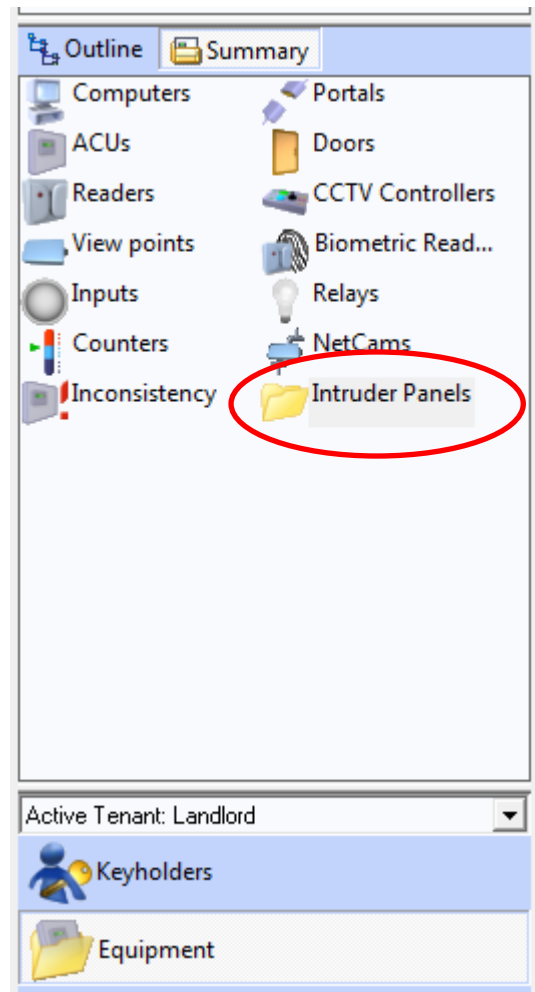


Figure 6 Intruder Panel Summary

Then when the window appears:

1. Select the new Intruder Panel from the right hand side
2. Enter the Name for the panel
3. Select the panel type from the Model drop down list
4. Enter the IP address (note the port number should be 10001).



**NOTE.** The UserName and Password fields are not used at present

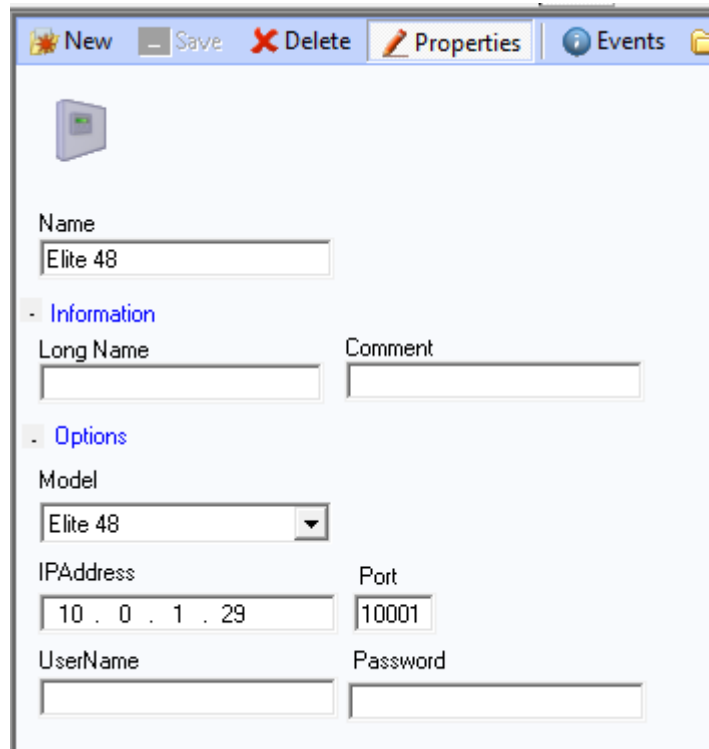


Figure 7 Add New Panel



**NOTE.** The SDK must be running prior to the panel being added. If the SDK isn't running then the panel zones and other status information will not be created correctly.

Once the panel has been added then the SDK will interrogate the panel to get the zone, area and system information and populate the database accordingly.

Once the panel has been added the SDK will interrogate the panel for any new events and any changes in status every 10 seconds.

## 4.3 Configure Arm/Disarm Readers

If you wish to use access control readers to arm and disarm the intruder panel then you need to configure these.

Configuration of the readers is via the InreuderConfiguration application which is located in C:\Program Files (x86)\TDSi\Exgarde\SDK\Runtime\Intruder directory.

### Configure Readers

When you run the application, enter the default user name and password of the SDK user and click the **connect** button. This will then display the configured intruder panels and readers on the system.

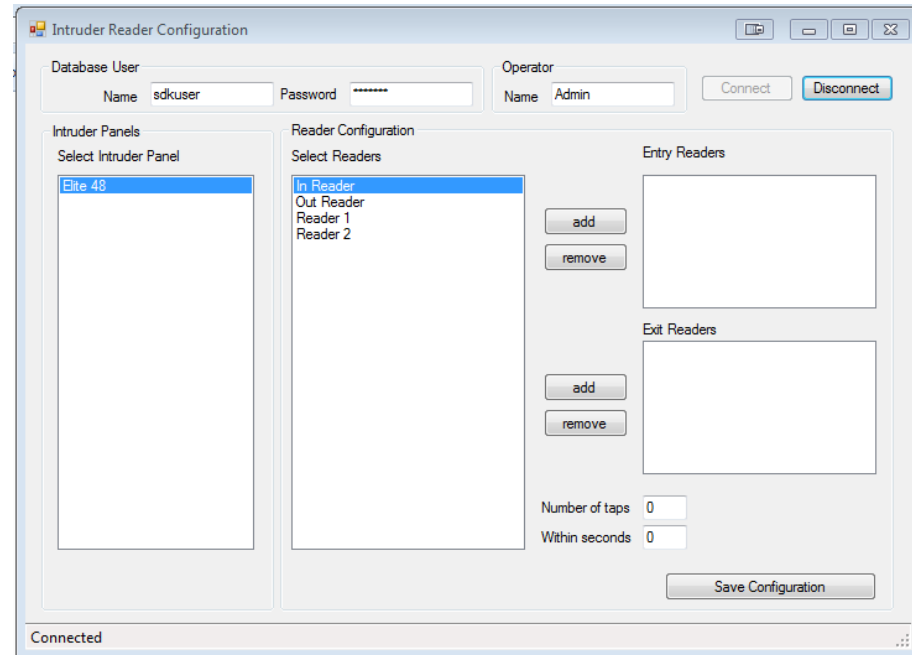


Figure 8 Configure Arm/Disarm Readers

First of all select the intruder panel you want to configure.

Then select the reader you will use as an entry reader (this will disarm the panel) and click the **add** button alongside the Entry Readers box. Repeat the same process for the Exit readers (used to arm the system).

## Configure presentation method

To configure how many times you need to present your card enter a value into the Number of taps.

To configure the duration in which the number of presentations should be made enter a time in seconds in the Within Seconds box.

The figure below uses the In Reader to Disarm the system, the Out reader to Arm the system and the card needs to be presented twice within 5 seconds.

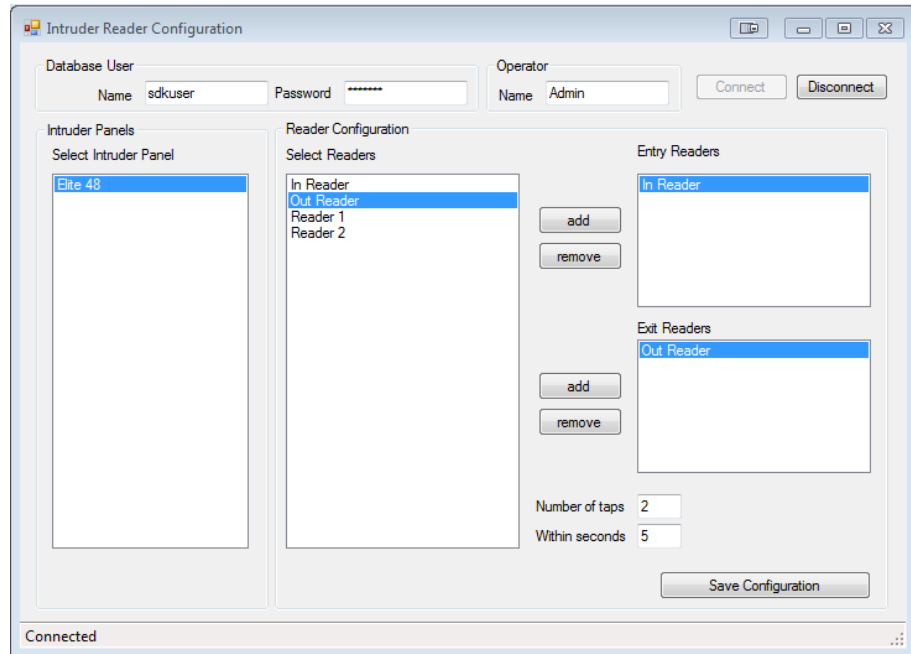


Figure 9 Completed Arm/Disarm Configuration

When you are complete click the **Save Configuration**. This will save the information in the IntruderConfig.xml configuration file which is located in the Runtime\Service directory. See Appendix for details of the file structure.

## 5.1 Intruder configuration file

The configuration file is in XML format and consists of the following elements:

- Panel Id = Id of intruder panel in EXgarde database
- InReader id = id and name of reader to use to disarm panel
- OutReader id = id and name of reader to use to arm panel
- Taps = Number of taps and time

```
<?xml version="1.0" encoding="UTF-8"?>
- <Configuration>
  - <Panel id="559">
    - <InReaders>
      <InReader id="1650" name="Reader1"/>
    </InReaders>
    - <OutReaders>
      <OutReader id="1651" name="Reader2"/>
    </OutReaders>
    <Taps WithinSeconds="5" NumberRequired="2"/>
  </Panel>
  - <Panel id="579">
    - <InReaders>
      <InReader id="1650" name="Reader1"/>
    </InReaders>
    - <OutReaders>
      <OutReader id="1651" name="Reader2"/>
    </OutReaders>
    <Taps WithinSeconds="5" NumberRequired="2"/>
  </Panel>
</Configuration>
```

Time and Data Systems International Ltd  
Unit 10 Concept Park  
Innovation Close  
Poole  
Dorset  
BH12 4QT  
UK

t: +44 (0)1202 723535  
f: +44 (0)1202 724975  
w: <http://www.tdsi.co.uk/>

Sales Enquiries: <mailto:sales@tdsi.co.uk>  
Marketing Support: [marketing@tdsi.co.uk](mailto:marketing@tdsi.co.uk)  
Technical Support: <mailto:support@tdsi.co.uk>