



EXgarde Web

EXgarde Web provides a web browser front end for the core operational functions that are typically used with an Access Control system, such as user and card management. By utilising a web browser this functionality can be accessed from any computer connected to the system whilst also providing a secure login with operator credentials.

Key Features

Secure Login

Ensures only authorised people can access the functionality by using defined EXgarde Operators.

User Management

Manage users add, modify & delete from any web browser provides flexibility from anywhere. You don't have to be in front of an EXgarde Client thereby maximising efficiency.

Card Management

Issue or revoke cards from any mobile device ensures the security of your system works for your operational requirements as you require it.

Lost Cards

Mark a card as lost, either by card number or keyholder, as soon as it is reported even if you are not in the office.

Assign keyholders to access groups

Amend user's security access remotely to provide access when it is needed from your mobile device.

Door Control

View and release doors with real-time feedback.

Enrolment readers

Assign an active reader as an enrolment reader.

Keyholder Picture.

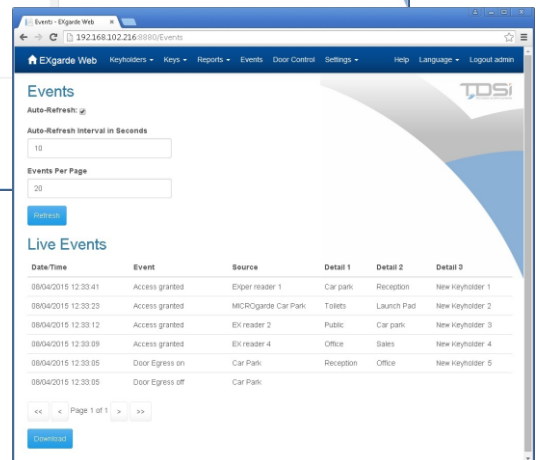
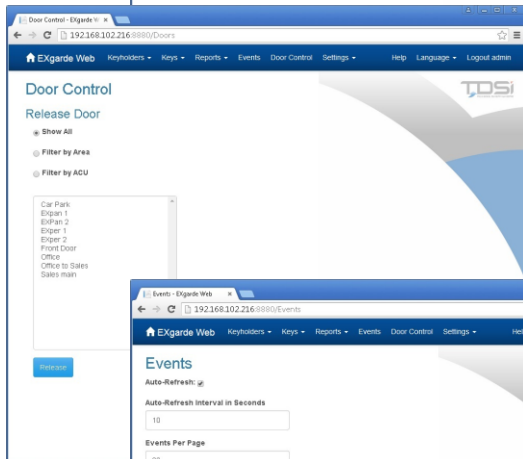
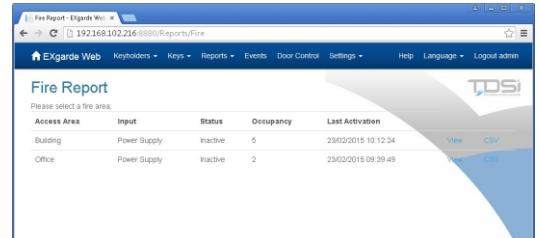
Upload a photo and assign to a keyholder.

View Reports

- View FILO reports for users to see hours worked.
- Create Fire reports based on access areas.
- Produce specific event reports by event types.

Alarms

Receive real-time notifications from alarms setup within EXgarde.



System Requirements.

- EXgarde 4.5 installed with a valid license.
- An additional workstation license.
- Minimum operating system of Windows 7 PRO or Server 2008.
- Minimum Microsoft .Net 4.5.1 installed.

Ordering Information

Part Number: Part Number 4420-2112
Description: EXgarde Web Functionality.