

Ultragard 2000 Quick start guide

Introduction

This document describes starting the software, logging in and getting to the point at which the first Key (card) is valid in the first Reader.

This document assumes that you have installed the software according to the guidance given in the manual.

What happens on the first re-boot

When the software installation process has completed, you will be asked if you wish to re-start the computer. You **MUST** do this, or the software will not run properly.

What happens after the re-start depends on which programs you asked to be placed in the Startup group. In a single-PC system it would be normal to have the Licence Server and Communications in the Startup group. Assuming that they are:

1. If you have no Licence Key installed then you will get an error message saying that a Licence Key cannot be found. OK the error and carry on - the database server will start and that is sufficient for an evaluation. If you can see a button on the toolbar which says "SQLBase Server" then the database has started.
 2. Communications will not run until you have set up the communications computer in the database: this is explained below. There will be an error message saying that: "Computer XXXXX is not installed as a communications computer". Make a note of the name of the computer - you will need it later.
-

Getting the first Key valid

Summary

1. Start the Licence Server
2. Start the Explorer and log-in
3. Set up the first Access Area
4. Set up the Communications computer
5. Set up the first Access Control Unit (ACU)
6. Start the Communications program
7. Set up the first Access Group
8. Set up the first Key holder

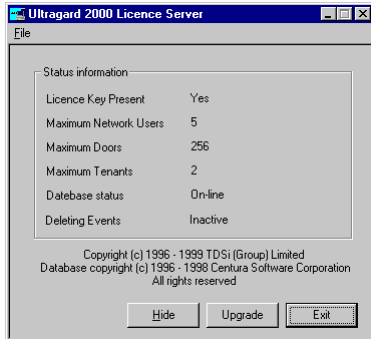
Starting the Licence Server

We recommend that the computer which has the database is configured to boot up directly into Windows, with either no network log-in or an automatic log-in.

A short-cut for the Licence server should also be in the start-up group (for the appropriate user profile, if profiles are in use). If you follow these recommendations then re-booting your computer will have caused the licence server to start. This will automatically start the database server as well.

If the licence server is not running, start it from the Start menu:
(Start/Programs/Ultragard 2000/Ultragard 2000/Licence Server).

The program starts very quickly (a couple of seconds); when you see the user-interface window titled "Ultragard 2000 licence server" then it is up and running. It is worth looking at the window to check that the licence Key is present and that the database is on line:



You will also see a button on the Task Bar titled "SQLBase Server":



(If you have no Licence Key installed then you will get an error message saying that a Licence Key cannot be found. OK the error and carry on - the database server will start and that is sufficient for an evaluation. If you can see the button on the toolbar that says "SQLBase Server" then the database has started.)

In normal use you will not need to use the user-interface for either the Licence Server or SQLBase server; leave them minimised on the task bar.

Starting the Explorer

Start the Explorer from the Start menu:
(Start/Programs/Ultragard 2000/Ultragard 2000Explorer).

You will see a log-in screen:



Enter the following information before clicking OK:

Tenant: Landlord
Operator: Admin
Password: tdsi

Note that these entries are case-sensitive. The program starts after a few seconds; the user-interface is an Explorer-style window with the title "Ultragard 2000".

How to use the Explorer

The Ultragard 2000 Explorer follows the same conventions as Windows 95/98/NT4/2000. In particular, expandable trees and right-click menus are used extensively. If you are at all unfamiliar with these techniques then please take some time to familiarise yourself with them, by looking through the Introduction in the Windows help system (select Help from the Start button).

Set up the first Access Area

Double-click on "Access Control Site" then on "Building" so that you have expanded the tree down to:



Right-click on Access Areas and select New Access Area. Give that Access Area a name, and click on OK. You will see that you now have an Access Area called Public, which has your new Access Area as a branch off it:



Set up the Communications Computer

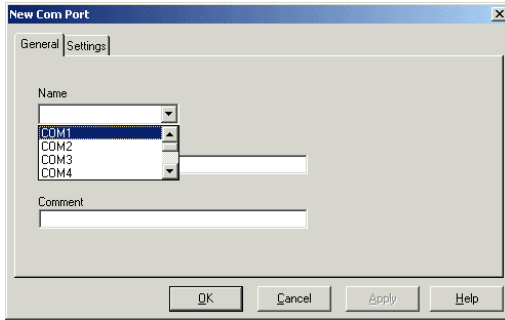
Right-click on Equipment and select New Computer. The following form appears:

The 'New - Computer' dialog box has three tabs: 'General', 'Ports', and 'Performance'. The 'General' tab is active, showing three text input fields: 'Name', 'Long Name', and 'Comment'. At the bottom are buttons for 'OK', 'Cancel', 'Apply', and 'Help'.

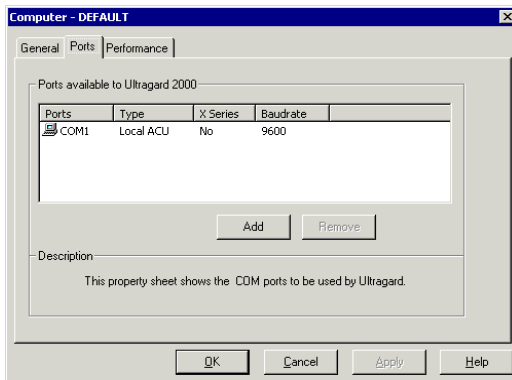
Give that computer a name which matches the name of your computer (or, in a multi-user installation, the name of a computer with ACUs attached). (The name can be determined from Start | Control Panel | Network | Identification; it is also the name which appears in the error message if you start the communications program before you have defined the computer.) Then select the Ports tab:

The 'Computer - DEFAULT' dialog box has three tabs: 'General', 'Ports', and 'Performance'. The 'Ports' tab is active, showing a table titled 'Ports available to Ultragard 2000' with columns for 'Ports', 'Type', 'X Series', and 'Baudrate'. Below the table are 'Add' and 'Remove' buttons. A 'Description' field contains the text: 'This property sheet shows the COM ports to be used by Ultragard.' At the bottom are buttons for 'OK', 'Cancel', 'Apply', and 'Help'.

Click on Add to specify which communications port is to be used.



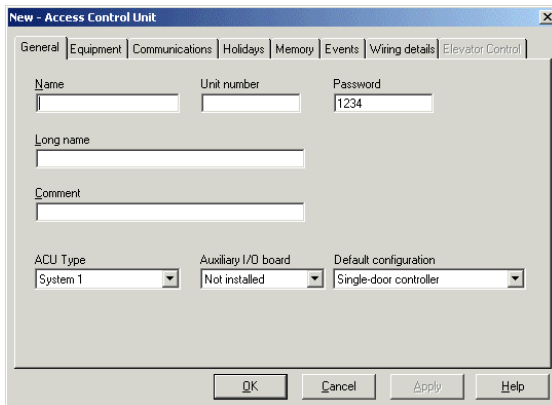
Select the port and click on OK. If you are using S-Series ACUs, don't modify any of the settings for the port. If you are using X-Series ACUs, modify the settings accordingly, choosing 38,400 baud. The screen should now look like this:



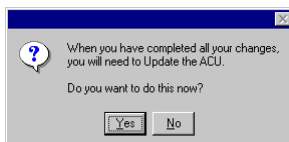
Click on OK to save the computer settings into the database.

Set up the first ACU

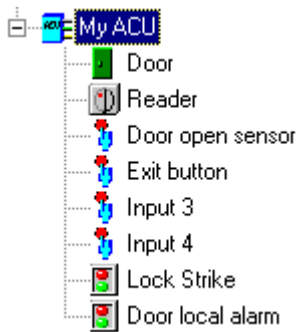
Right-click on the computer, and select New ACU:



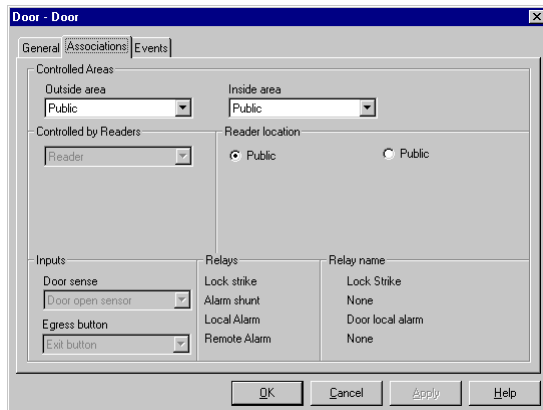
Give it a name, select the appropriate ACU type and configuration, and click on OK. You will be asked if you want to refresh the ACU:



- say No. You will now see the ACU as a branch off the computer. Expand this ACU (the example below shows a System1):

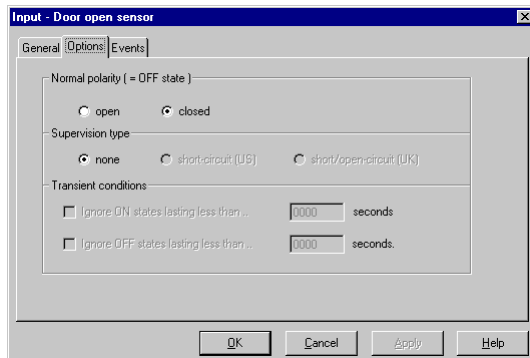


Right-click on the first Door and select Properties, then the Associations tab:



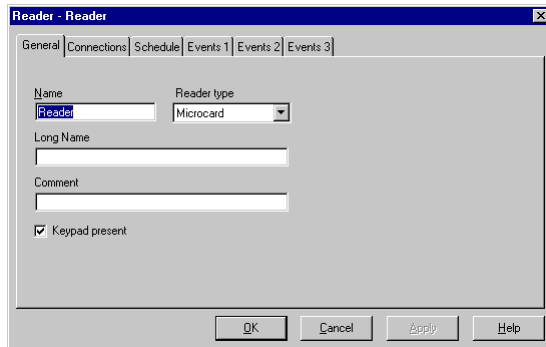
In the two drop-down lists at the top of this tab-sheet, select the Access Areas either side of the Door, and which Readers are on either side of the Door (certain items may be greyed-out if their configuration is pre-determined by the type of ACU). Click on OK - you will be asked if you want to refresh the ACU - say No.

You may also need to change Door sensor polarity depending on the type of door sensor installed; to do so right-click on the Door sensor and select the Options tabsheet. Then change its polarity:



Click on OK - you will be asked if you want to update the ACU - say No.

You will also need to change Reader type if the reader is not a TDSi Microcard reader; to do so right-click on the Reader and change its type:



Click on OK - you will be asked if you want to refresh the ACU - say No.

Starting Communications (ACUCOMMS.EXE)

If communications is not running, start it from the Start menu:
(Start/Programs/Ultragard 2000/Ultragard 2000 Communications).

Communications takes a short while to display a window with the title "Ultragard 2000 Communications" and displays some status information in its lower-left corner while it is loading data. Once this information disappears, the computer will start communicating with the ACUs; this activity can be confirmed by looking at the monitor lights on the RS232/RS485 protocol converter (if you have one) or on the ACU (you need to remove its front cover to see its monitor lights).

Note that you can tell if the communications program is running by looking in the Explorer at the computer in question: a red line through the computer means that it is not.

You can tell if communication has been established with the ACU by looking in the Event List. To see this list, click on the blue "i" button in the Explorer toolbar:



If communication cannot be established with any ACU, a "Time-Out" event for that ACU is placed in the list. Also, in the Communications window, the lower left corner will show which units are "on-line" and which are "off-line".

If communication has been established with the ACU, right-click on the ACU in the Explorer window and select "Reset ACU". The configuration will be downloaded to the ACU and you will see one or more Restart events in the Event List.

At this point you could confirm that other aspects of the installation are functioning; for example:

- swipe a Key and confirm you see an event
- right-click a Door in the Explorer and select Release; confirm the door is unlocked for a few seconds

Set up the first Access Group

An access Group is a group of people and their access rights; i.e. it defines the Access Areas that the members of the Group may enter. Note that each Key Holder may be a member of more than one Group.

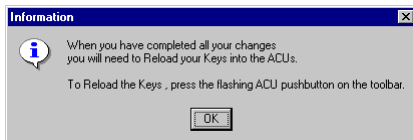
Expand the tree down to:



Right-click on Access Groups and select New Access Group. Give this Group a name and click on OK.

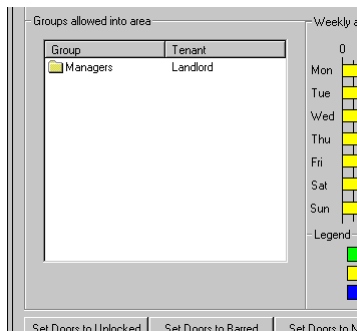
You will see that you now have two Groups; Everyone and your new Group. The Everyone Group is pre-defined and cannot be deleted, nor can its properties be changed. This Group automatically contains all the Key Holders and allows access into the Public Access Area.

To define the access rights of your new Group, drag-and-drop it onto the Access Area you created earlier. You will get a message asking if you are sure you want to do this; answer Yes and you will get another message saying you will need to reload all you Keys into all your ACUs:



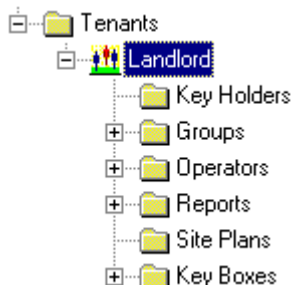
OK this error message and ignore the blue flashing ACU symbol on your toolbar.

To confirm that this has worked, left-click on the Access Area in question; you will see the Groups allowed into that Access Area in the right-pane:

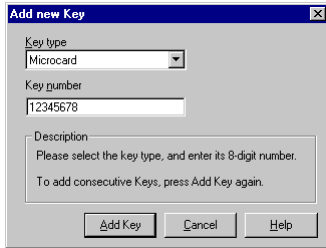


Set up the first Key Holder

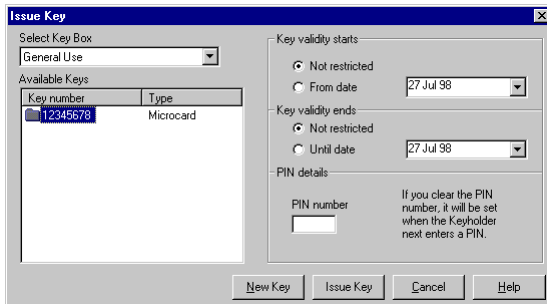
Expand the tree down to:



Right-click on Key Holders and select New Key Holder. Give this Key holder a name and click on the Keys tab. Click on Add, then on New Key. Select the appropriate type, type in the number of the Key, and click on Add Key:

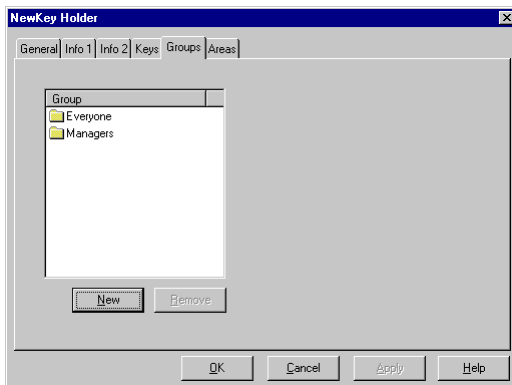


(Note that the display automatically increments the Key number by one, in case you are adding a sequence of Keys). Click on Cancel, select the Key from the list displayed:



Click on Issue Key.

Click on the Groups tab, and then on Add. Select the Group you have created and click on OK:



Close the Key Holders properties sheet. At this point, the Key number is automatically sent to the ACU; within seconds that Key can be used at the Reader and will allow access.