



eXguard **PRO**

Installation manual

6656-0394 Issue 2

This page intentionally blank

Table of Contents

Notices	4
Introduction	5
Single user installation	5
Multi-user installation.....	5
Communication requirements.....	6
ACU specification	6
Installation.....	7
Before you start.....	7
What's in the box.....	7
Upgrading from Ultragard 8.....	7
Upgrading from Ultragard 2000	8
Upgrading from single-user to multi-user.....	8
Installing the Licence Key.....	8
Installing eXguard PRO.....	9
First steps with eXguard PRO	13
Backup.....	13

Notices

eXguard is designed and manufactured by:

TDSi Ltd.,
Sentinel House,
Nuffield Road,
Poole,
Dorset BH17 0RE
England

Telephone:

Within UK: 01202 666222
International: +44 1202 666222

Fax:

Within UK: 01202 679730
International: +44 1202 679730

E-mail

info@tdsi.co.uk

Web site

www.tdsi.co.uk

Other supplier information:

DEALER STAMP

Copyright

Copyright © 2003 Time and Data Systems International Ltd., Poole. All rights reserved. This document, and any software supplied with it, may not be reproduced in any form or by any means in whole or in part without prior written consent of the copyright owners.

Policy

Time and Data Systems has a policy to continuously improve its products. Therefore the company reserve the right to change specifications, colours or prices of its products at any time without prior notice.

Limitation of liability

In no event shall seller be liable to buyer, whether in contract or in tort or under any other legal theory, for lost profits or revenues, loss of use, or similar economic loss, or for any indirect, special, incidental, consequential or similar damages, arising out of or in connection with the sale, delivery, non-delivery, servicing, use, maintenance, condition or possession of any and all of the system or software, or for any claim made against buyer by any other party, even if seller has been advised of the possibility of such claim. In no event shall seller's liability under any claim made by buyer exceed the amounts paid for the system and the use of the software in respect of which such claim is made.

Introduction

Congratulations! You've chosen one of the most advanced access control products available, yet it is also among the easiest to install and, especially, to use.

This manual tells you all you need to know in order to get eXguard PRO installed and running. From that point on, you should refer to the Help system, which can be accessed by pressing F1 when **eXguard Explorer** is running.

Single user installation

In this context, the term "single-user" refers to a single computer being used for the whole Ultragard 2000 system. If you are using more than one computer, please refer to the next section, entitled "Multi-user installation".

Minimum specification up to 16 Access Control Units (ACUs) and 500 Key Holders

- Pentium P3, 1 GHz
- 256 MB RAM
- Display set to 800x600, 256 colours or above
- Windows 98/ME/NT4 SP6/2000/XP Home/XP PRO
- 10GB hard disk free space available
- CD-ROM drive
- Parallel port
- Communications path to ACUs. For more details on options, see below.

Recommended spec up to 32 ACUs and 5000 Key Holders

As above except for the following:

- Pentium P4, 1.5 GHz
- 512MB RAM
- Windows 2000/XP Home/XP PRO
- High spec graphics card
- Max. 8 ACUs per com port
- Max. 2 com ports per computer
- 30 GB Hard Disk
- 2nd Hard disk on Database PC
- Explorer always on separate PC from Database and comms (this becomes a multi-user installation – please also read the next section)

Above 32 ACUs or 5000 Key Holders

Please contact TDSi for advice.

Multi-user installation

In this context, the term "multi-user" refers to more than one computer being used for the eXguard PRO system. If you are using a single computer, please refer to the previous section, entitled "single-user installation".

Please note that a multi-user Licence Key is required if you want to use more than one computer.

If you already have a single-user installation and want to upgrade to a multi-user installation, then please refer to the section titled "Upgrading from single- to multi-user".

Options

During installation, you will be presented with a choice of components to install. There are three main components:

- **Network Database** - can only be installed on one computer. Although this is presented as a single option, four sub-components will be installed: the **database server**, the **database**, the **licence server** and the **backup utility**.
- **Communications** - must be installed on any computer that has connection to one or more ACUs.
- **Explorer** - can be installed on as many computers as required, subject to licence restrictions.

Also, you will be asked if you wish to install the **Ultragard 8 Export program**. If you have been using Ultragard 8 then this program will allow you to export much of the data for use in Ultragard 2000.

Computer specifications for multi-user installation

The recommended specification of each computer depends in part on the optional components you will be installing.

Hard disk capacity

Only the computer with the database requires significant hard-disk capacity.

Communication port(s)

Only required for computers that will be connected (directly or via modem) to ACUs.

Parallel port

Only required on the computer where the database is installed, or where printed reports are required.

High-specification graphics card

Only required on computers that will run Ultragard 2000 Explorer.

Communication requirements

eXguard PRO can communicate with ACUs in the following ways:

- RS232 serial connection to a single ACU, maximum cable run 15m (requires a free serial port on the computer)
- RS485 serial connection with up to 31 ACUs, maximum cable run 1200m (requires a free serial port on the computer and an RS232/RS485 converter)
- Connection over an Ethernet network (eXcel⁴ has a built-in Ethernet port; other ACU types require a separate Ethernet/RS485 converter). Note that an Ethernet-connected eXcel⁴ can have other ACUs connected to it via RS485 without the need for any converters.
- dial-up modem connection to a single ACU (requires a modem to be installed and configured using the Windows operating system)

Full details on installing and setting up these options are contained in the manuals that accompany the hardware.

ACU specification

eXguard PRO is designed to work with the following ACUs from TDSi:

- S-Series version 4
- X-Series
- eX-Series (eXcel²; eXcel⁴ and eXpert²)

Depending on the version of eXguard PRO that you have purchased, there may be a restriction on the number of doors that can be controlled and monitored.

Information on upgrading your installation is available in the eXguard Help system, which you can access from eXguard Explorer after installation.

Installation




Before you start

In order for you to use this manual and successfully complete the installation, we have made the following assumptions:

- You already have a basic knowledge of using the Windows operating system installed on your computer.
- You are installing eXguard on a computer that meets or exceeds the required specification.
- If you are installing eXguard to communicate with ACUs over a network, you already have TCP/IP running on the computer
- If you are installing a multi-user system, all computers in the system have TCP/IP running

What's in the box

You should have received the following components:

eXguard CD	
A Licence Key (sometimes referred to as a Dongle). Without a Licence Key, the software may be used for demonstration purposes, for 30 days. If you have additional, upgrade, keys then these are not required until after the initial installation.	
This manual	

If any of these components is missing, please contact your supplier.

Upgrading from Ultragard 8

If you are upgrading an existing Ultragard 8 installation, then the personnel (Key Holder) data and access rights can be imported into the eXguard PRO database using tools which are included on the eXguard PRO CD ROM.

The process involves two steps:

- Install and run the **Ultragard 8 Export** program on the computer where the Ultragard 8 database resides.
- Copy the resulting file onto the computer where the eXguard PRO database is installed, and run the **eXguard Import** program.

Further details can be found in the eXguard PRO Help system.

Upgrading from Ultragard 2000

All data in an Ultragard 2000 database is retained when upgrading to eXguard PRO. During the installation of eXguard PRO, when asked for the location of the database, enter the location of the Ultragard 2000 database folder. For example, if the file `ug2000.dbs` is in the following directory:

```
C:\sqlbase\ug2000
```

then you would choose the following location:

```
C:\sqlbase
```

Upgrading from single-user to multi-user

To upgrade from single- to multi-user, first un-install eXguard then re-install it with the appropriate options. After installation, you then upgrade your Licence Key as described in the eXguard Help system.

The database is not removed during the un-install process; during the re-installation you simply specify its location.

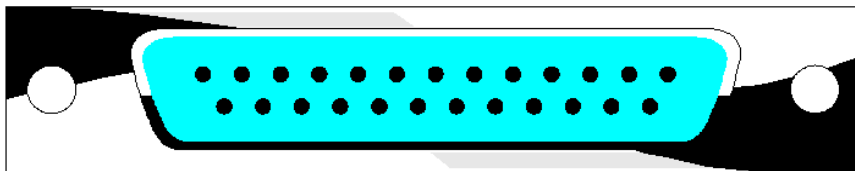
Installing the Licence Key

No Licence Key is required for a 30-day, single-user evaluation period.

The Licence Key must be installed in the printer (parallel) port on the back of the computer that has the database installation. In case the printer port is not clearly labelled (look for the words Printer, PRT, Parallel, LPT, LPT1 or an icon of a printer), the appearance of this socket is illustrated below.



Be careful not to confuse the parallel port - which is a socket - with a serial port, which has visible pins. The Licence Key is embossed "Computer" with arrows to show which end should be plugged into the computer; you will only be able to plug it into a parallel port if you have it the right way round.



Printer port (25-way socket)

Licence Key installation procedure

1. Before you install the Licence Key, the computer should be plugged into the mains but turned off.
2. If you are already using a printer on the same port, turn off the power to the printer and disconnect the printer cable.
3. Insert the Licence Key into the port Tighten the securing screws.
4. If you disconnected a printer, you should now re-connect it to the external socket provided on the Licence Key.



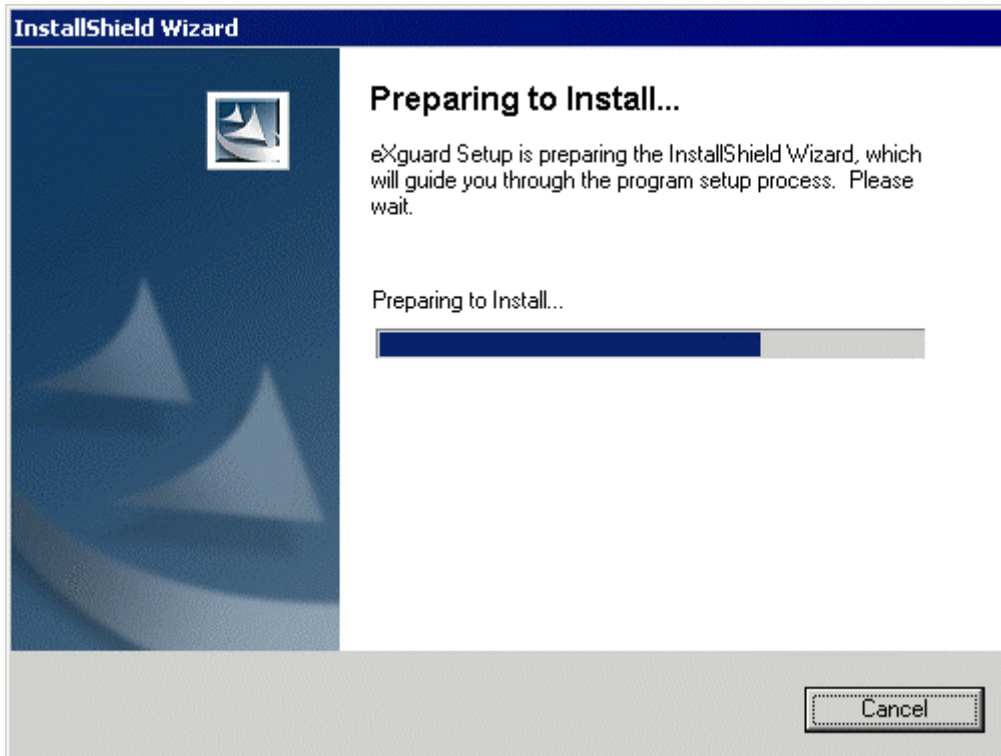
Please note that the Access Control Units are never connected via the parallel printer port. Nothing other than a printer should be connected to the Licence Key.

Installing eXguard PRO

Power up your computer and, if using Windows NT/2000/XP, log in to Windows as a user with Administrator rights. Close all programs so that only the Windows Start button remains on the Windows task bar.

Insert the eXguard CD-ROM in your CD drive. If your computer is configured to auto-run data CDs, the installation process will start automatically. Otherwise, run **setup.exe** on the CD-ROM or use the Add/Remove PROgrams option in the Windows Control Panel.

The first screen you'll see is this one:



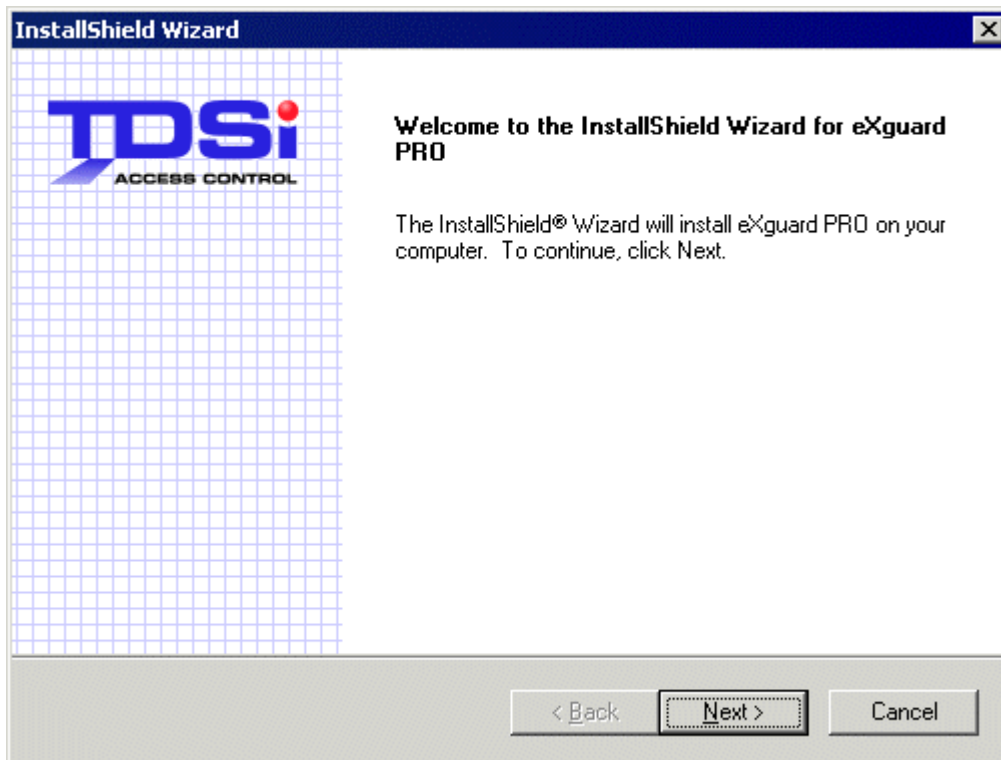
After this a warning may be displayed if either of the following is missing from your computer:

- **Internet Explorer 5.0 or above**, which is required for the eXguard Help system (this will cause the installation to be aborted)
- **Adobe Acrobat Reader 5**, which is required if you want to open any of the manuals that are included on the eXguard CD. This manual is on the CD, as well as the installation manual for eXcel 2 access control units. Older versions of Acrobat may be suitable, but the warning will still be displayed.

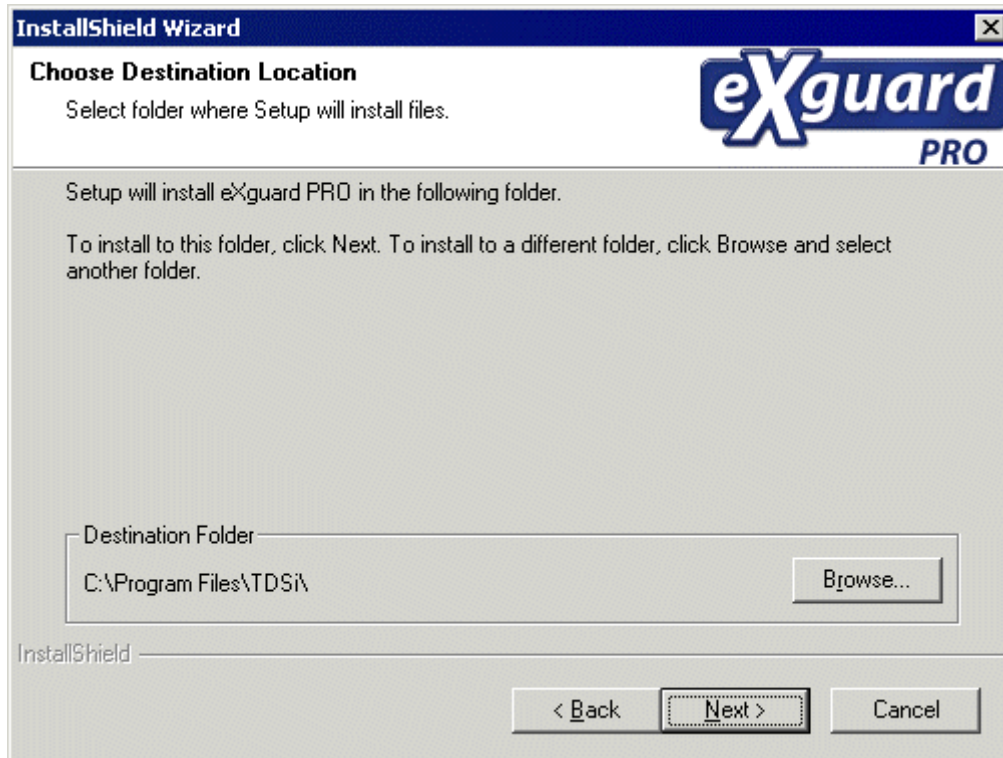
Both of these applications are included on the eXguard PRO CD.

There are other aspects of your computer (for example, the processor) that, if not up to the required specification, will cause the installation to be aborted. To continue, correct the required items and re-start the installation.

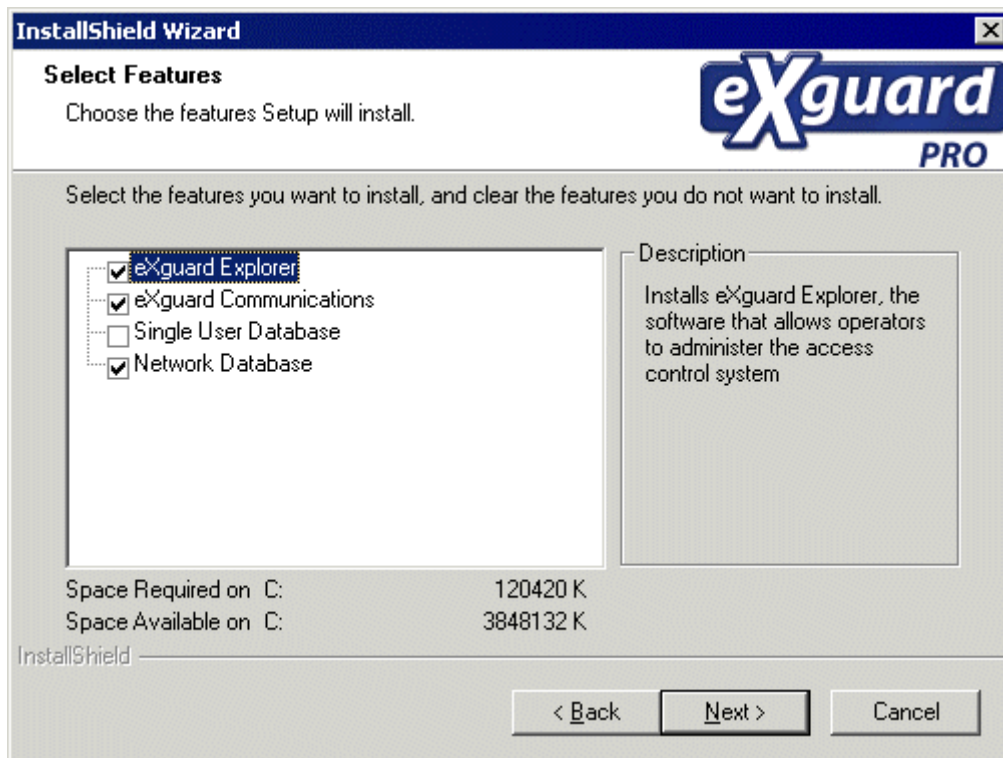
If your computer meets the required specification, you will see the eXguard installation Welcome screen:



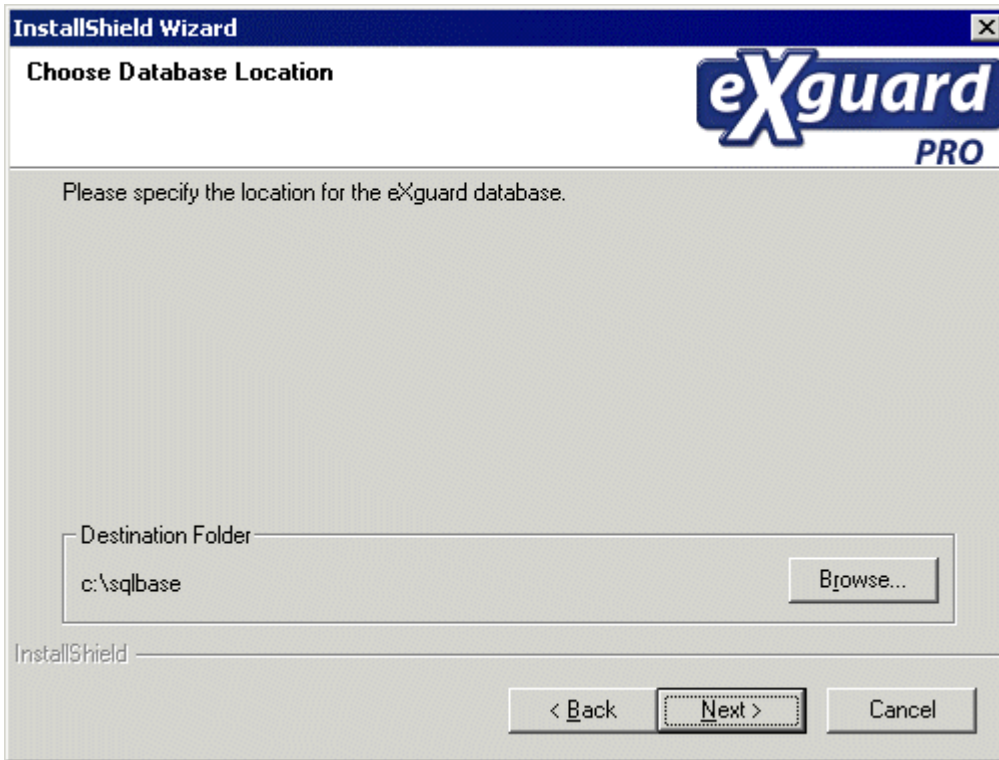
Click on Next, read and accept the Licence agreement and you will be asked for the location for the program files:



Next you are asked for the components to be installed on this computer:



If one of the database options is selected, you will then be asked where the database should be located:



(If neither database option is selected, instead of this screen you will be asked for the IP address of the computer hosting the database).

Click on **Browse** if you wish to change the location, or on **Next** if you are happy with this location. You will then be asked whether you want any program icons placed on the desktop, and whether any of the programs should start up automatically when the computer is re-started. Finally you will see a confirmation of your selection; click on Next and the installation will start.

You will be told when the installation process is complete.

First steps with eXguard PRO

After installation, you will find a new PROgram Group – eXguard - available when you click on the Start button on the Windows taskbar. This contains five items:

- eXguard Communications
- eXguard Backup
- eXguard Explorer
- eXguard Licence Server
- eXguard Import

First start the eXguard Licence Server, which automatically starts the Database application.

Then start eXguard Explorer, which will ask you to log in:



The required information is:

- Tenant: Landlord
- Operator: Admin
- Password: tdsi

Note that all entries are case sensitive except the password.

Once the Explorer window is open, you should open the Help system (Press F1 or use the Help menu on the menu bar) to learn how to get your first card valid.

Backup

We strongly recommend that you have the eXguard backup application running at all times, set to back up your database once per day, to a different hard disk (or even a different computer).