



eXguard **LITE**

Installation manual

6656-0393 Issue 2

This page intentionally blank

Table of Contents

Notices	4
Introduction	5
Computer specification	5
ACU specification	5
Communication requirements.....	5
Installation.....	6
Before you start.....	6
What's in the box.....	6
Upgrading from Ultragard 2000	6
Installing eXguard LITE	7
First steps with eXguard LITE.....	10
Backup.....	10

Notices

eXguard is designed and manufactured by:

TDSi Ltd.,
Sentinel House,
Nuffield Road,
Poole,
Dorset BH17 0RE
England

Telephone:

Within UK: 01202 666222
International: +44 1202 666222

Fax:

Within UK: 01202 679730
International: +44 1202 679730

E-mail

info@tdsi.co.uk

Web site

www.tdsi.co.uk

Other supplier information:

DEALER STAMP

Copyright

Copyright © 2003 Time and Data Systems International Ltd., Poole. All rights reserved. This document, and any software supplied with it, may not be reproduced in any form or by any means in whole or in part without prior written consent of the copyright owners.

Policy

Time and Data Systems has a policy to continuously improve its products. Therefore the company reserve the right to change specifications, colours or prices of its products at any time without prior notice.

Limitation of liability

In no event shall seller be liable to buyer, whether in contract or in tort or under any other legal theory, for lost profits or revenues, loss of use, or similar economic loss, or for any indirect, special, incidental, consequential or similar damages, arising out of or in connection with the sale, delivery, non-delivery, servicing, use, maintenance, condition or possession of any and all of the system or software, or for any claim made against buyer by any other party, even if seller has been advised of the possibility of such claim. In no event shall seller's liability under any claim made by buyer exceed the amounts paid for the system and the use of the software in respect of which such claim is made.

Introduction

Congratulations! You've chosen one of the most advanced access control products available, yet it is also among the easiest to install and, especially, to use.

eXguard LITE provides you with the ability to control and monitor up to 16 doors. If you need a system with more doors, you can upgrade to eXguard PRO – this will also give you more features and further upgrade options.

This manual tells you all you need to know in order to get eXguard LITE installed and running. From that point on, you should refer to the Help system, which can be accessed by pressing F1 when **eXguard Explorer** is running.

Computer specification

- Pentium P3, 1 GHz
- 256 MB RAM
- Display set to 800x600, 256 colours or above
- Windows 98/ME/NT4 SP6/2000/XP Home/XP Pro
- 10GB hard disk free space available
- CD-ROM drive
- Communications path to Access Control Units (ACUs). For more details on options, see below.

ACU specification

eXguard LITE is designed to work with TDSi's eXcel² and eXcel⁴ Access Control Units. It is also compatible with TDSi's earlier S-Series products.

eXguard LITE will permit up to 16 doors, regardless of how many ACUs are installed.

Note that eXguard LITE is limited to 5000 Key Holders even though the eXcel controllers have a capacity in excess of this.

Information on upgrading your installation is available in the eXguard Help system, which you can access from eXguard Explorer after installation.

Communication requirements

eXguard LITE can communicate directly with ACUs (i.e. using a dedicated cable) or across an Ethernet network, which may be shared with other network users. The options and requirements are:

- RS232 serial connection to a single ACU, maximum cable run 15m (requires a free serial port on the computer)
- RS485 serial connection with up to 31 ACUs, maximum cable run 1200m (requires a free serial port on the computer and an RS232/RS485 converter)
- Connection over an Ethernet network (eXcel⁴ has a built-in Ethernet port; other ACU types require a separate Ethernet/RS485 converter). Note that an Ethernet-connected eXcel⁴ can have other ACUs connected to it via RS485 without the need for any converters.

Full details on installing and setting up these options are contained in the manuals that accompany the hardware.

Installation



Before you start

In order for you to use this manual and successfully complete the installation, we have made the following assumptions:

- You already have a basic knowledge of using the Windows operating system installed on your computer.
- You are installing eXguard on a computer that meets or exceeds the required specification.
- Any previous versions of TDSi's access control software (Ultragard and eXguard) have been un-installed.
- If you are installing eXguard to communicate with ACUs over a network, you already have TCP/IP running on the computer

What's in the box

You should have received the following components:

eXguard CD	
This manual	

If any of these components is missing, please contact your supplier.

Please note that no licence key is required for eXguard LITE version 1.1 onwards.

Upgrading from Ultragard 2000

All data in an Ultragard 2000 database is retained when upgrading to eXguard. During the installation of eXguard, when asked for the location of the database, enter the location of the Ultragard 2000 database folder. For example, if the file `ug2000.dbs` is in the following directory:

`C:\sqlbase\ug2000`

then you would choose the following location:

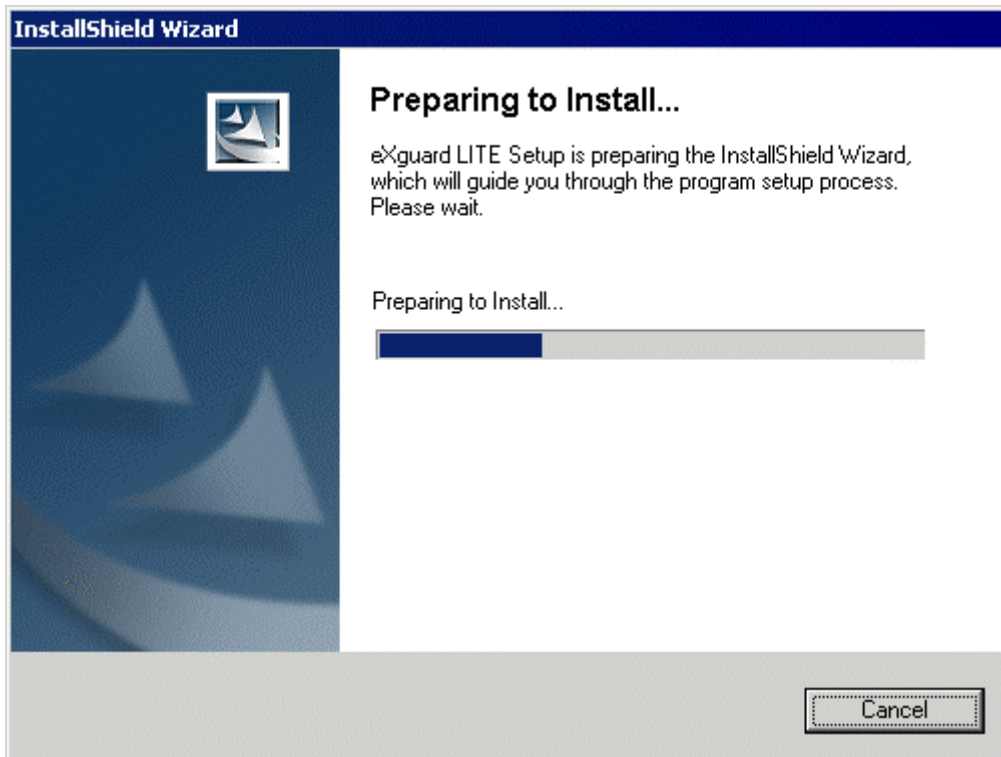
`C:\sqlbase`

Installing eXguard LITE

Power up your computer and, if using Windows NT/2000/XP, log in to Windows as a user with Administrator rights. Close all programs so that only the Windows Start button remains on the Windows task bar.

Insert the eXguard CD-ROM in your CD drive. If your computer is configured to auto-run data CDs, the installation process will start automatically. Otherwise, run **setup.exe** on the CD-ROM or use the Add/Remove Programs option in the Windows Control Panel.

The first screen you'll see is this one:



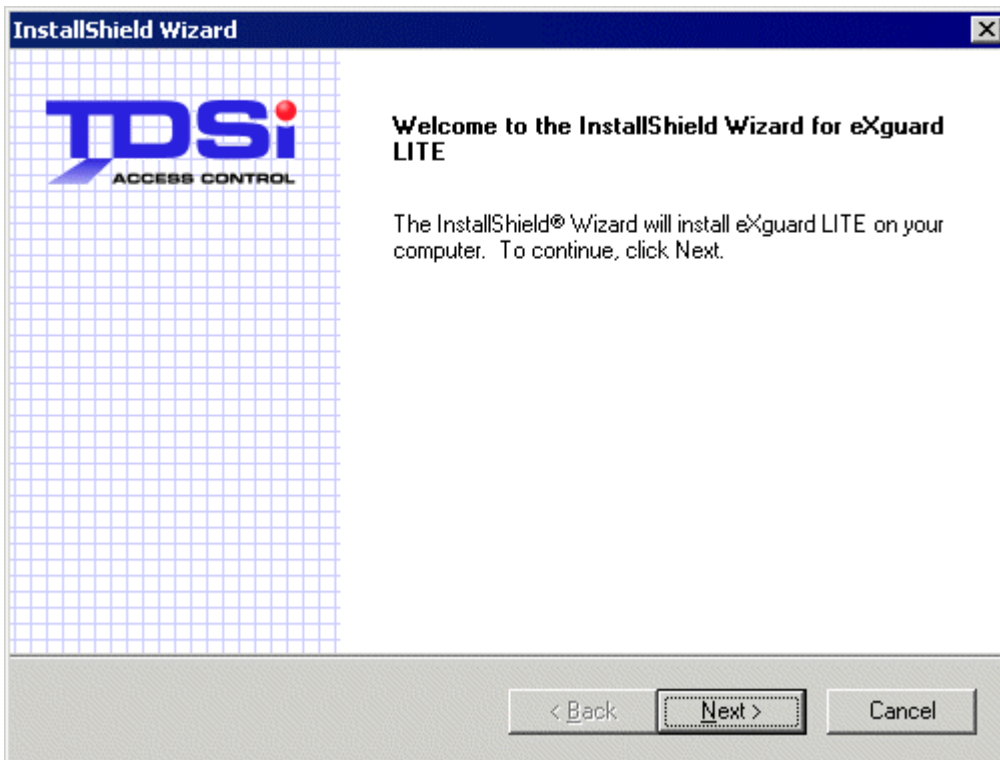
After this a warning may be displayed if either of the following is missing from your computer:

- **Internet Explorer 5.0 or above**, which is required for the eXguard Help system (this will cause the installation to be aborted)
- **Adobe Acrobat Reader 5**, which is required if you want to open any of the manuals that are included on the eXguard CD. This manual is on the CD, as well as the installation manual for eXcel 2 access control units. Older versions of Acrobat may be suitable, but the warning will still be displayed.

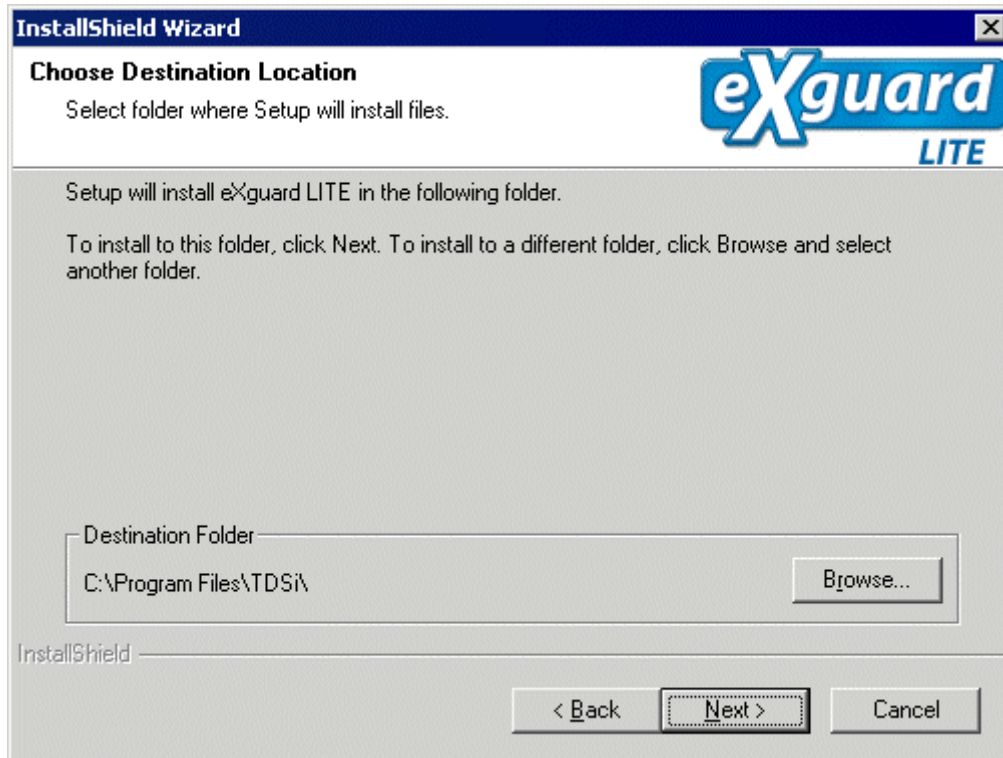
Both of these applications are included on the eXguard LITE CD.

There are other aspects of your computer (for example, the processor) that, if not up to the required specification, will cause the installation to be aborted. To continue, correct the required items and re-start the installation.

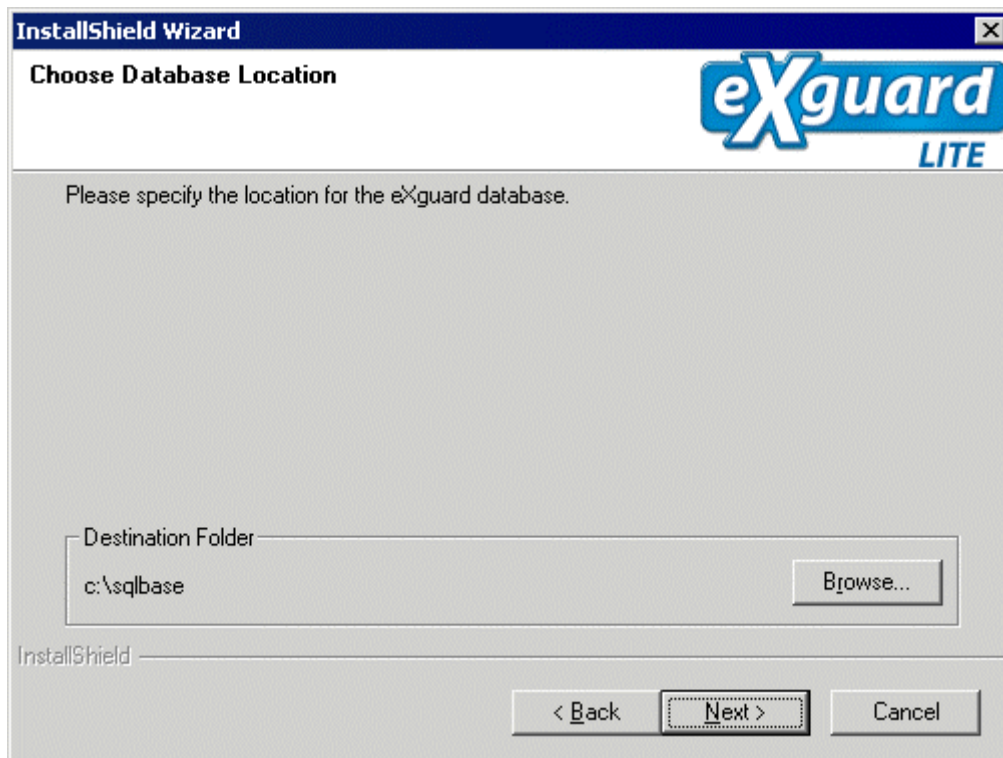
If your computer meets the required specification, you will see the eXguard installation Welcome screen:



Click on Next, read and accept the Licence agreement and you will be asked where the Program files should be located:



Next you are asked where the database should be located:



Click on **Browse** if you wish to change the location, or on **Next** if you are happy with this location. You will then be asked whether you want any program icons placed on the desktop, and whether any of the programs should start up automatically when the computer is re-started. Finally you will see a confirmation of your selection; click on Next and the installation will start.

You will be told when the installation process is complete.

First steps with eXguard LITE

After installation, you will find a new Program Group – eXguard - available when you click on the Start button on the Windows taskbar. This contains four items:

- eXguard Communications
- eXguard Backup
- eXguard Explorer
- eXguard Licence Server

First start the eXguard Licence Server, which automatically starts the Database application.

Then start eXguard Explorer, which will ask you to log in:

The screenshot shows a login window for eXguard Lite. The window has a title bar that says "eXguard Lite Login". The main area contains the eXguard LITE logo on the left. To the right of the logo are three text input fields labeled "Tenant", "Operator", and "Password". The "Tenant" field contains "TDSi", the "Operator" field contains "Admin", and the "Password" field is empty. Below the input fields are two buttons: "OK" and "Cancel". At the bottom left of the window, there is copyright information: "Copyright © 1996 - 2002 TDSi (Group) Limited", "Database copyright © 1996 - 2000 Centura Software Corporation", and "All rights reserved". At the bottom left, there is a red line and the website "WWW.TDSI.CO.UK". At the bottom right, there is the TDSi ACCESS CONTROL logo.

The required information is:

- Tenant: Landlord
- Operator: Admin
- Password: tdsi

Note that all entries are case sensitive except the password.

Once the Explorer window is open, you should open the Help system (Press F1 or use the Help menu on the menu bar) to learn how to get your first card valid.

Backup

We strongly recommend that you have the eXguard backup application running at all times, set to back up your database once per day, to a different hard disk (or even a different computer).